

MICROMEGA

YOUR AIRDREAM STREAMER & THE NETWORK



MICROMEGA

AIRPORT UTILITY – The indispensable tool for resetting your product :

After reset or simply in order to re-name your device, you must have installed the “**Airport Utility**” software on your Mac or PC.

An Apple CD is delivered with your product. Airport Utility is on this CD. If you don't have this CD available, it is also easy to download the software from the Apple website.

For Mac users, Airport Utility is in the Tool file of the Applications file.

For Windows users, Airport Utility is accessible after selecting Start > All programs > Airport.

RESET – How to reset and reconfigure your product :



! In order to use your product, it is not necessary to reset it. This operation is not trivial and we do not advise to do it!

Nevertheless, if you have reset your product, you must be very careful for this operation. It must have been done very correctly, or no configuration will be possible.

You must push on the rear “reset” button at the rear side of the device with the help of a pen or a pin for a few seconds, while the product is turned on. Once the AirDream logo (or the Led) is blinking **red quickly**, it means the parameters have been set to zero.

Wait almost **one minute** until the AirDream logo (or the Led) blinks in **red slowly** and in a regular pace, and you are ready to reset the station.

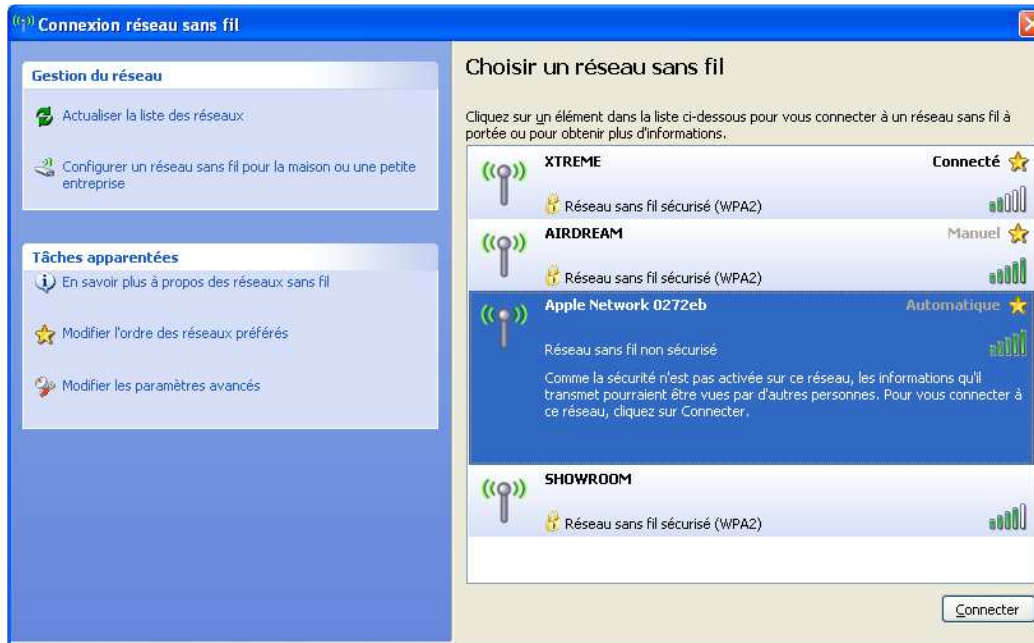
MICROMEGA

1. Reset first your product (see separate document : « Reset Airdream E »)
2. Connecting your device to your PC or Mac
 - a. To open « Available wireless networks », click or double-click on the network icon ( or ) in your toolbal.



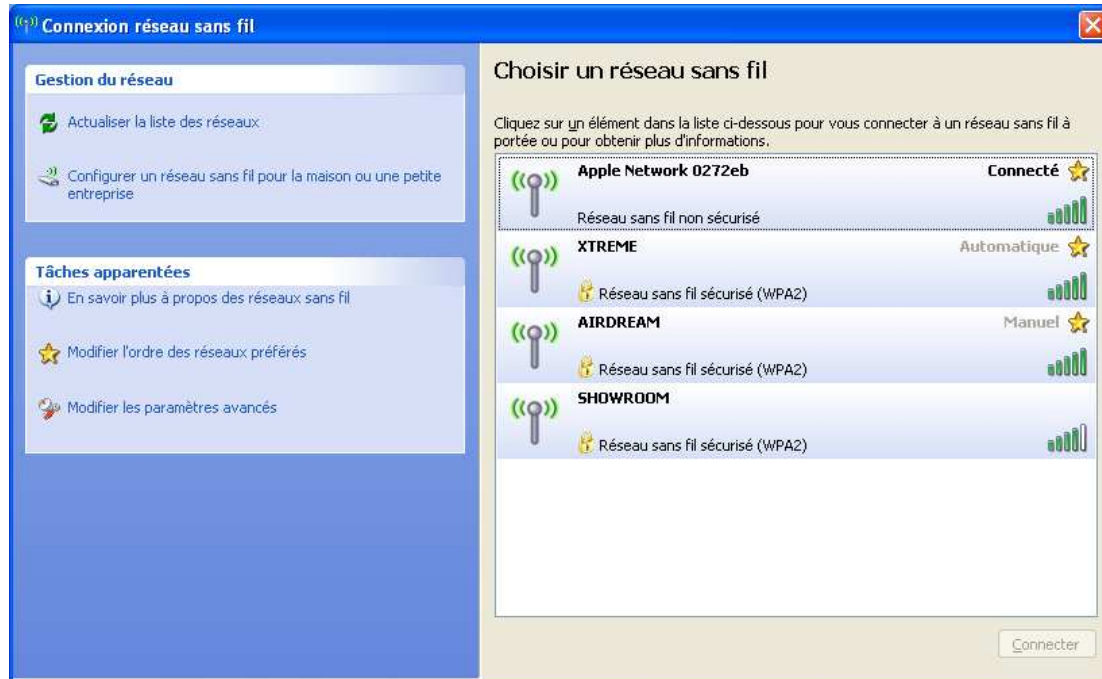
MICROMEGA

- b. You should already be connected to your network, (here, for demonstration, it wears the name « XTREME ». If not, connect first to your WiFi network.
In the list of available wireless networks, double-click on the name of **your device's network**.
After reset, the name of your device appears like this « Apple Network XXXXXX ».



MICROMEGA

You are now connected to your device.



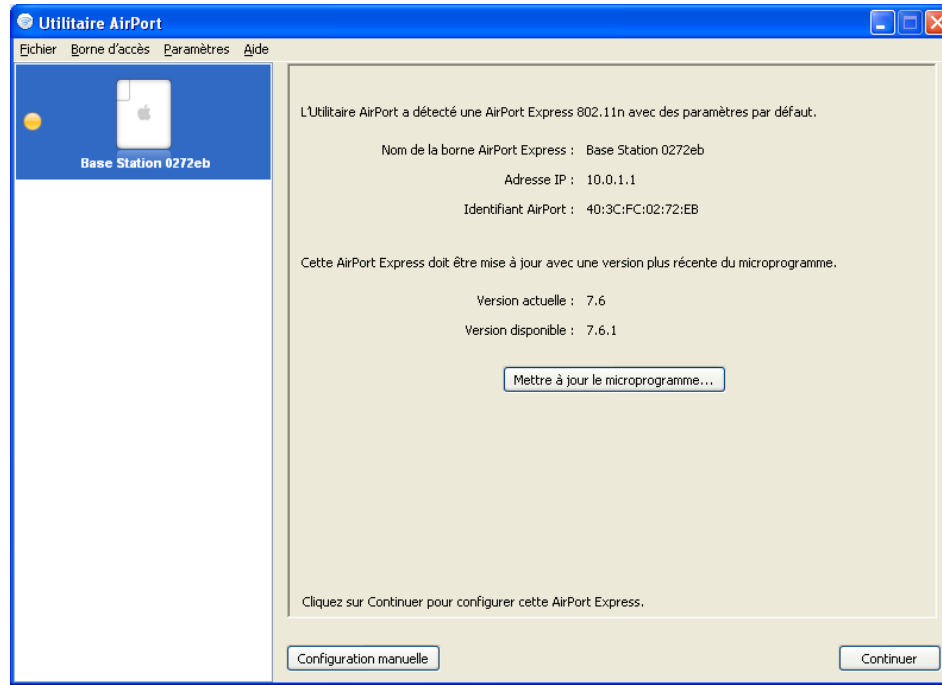
MICROMEGA

3. Run Airport Utility software



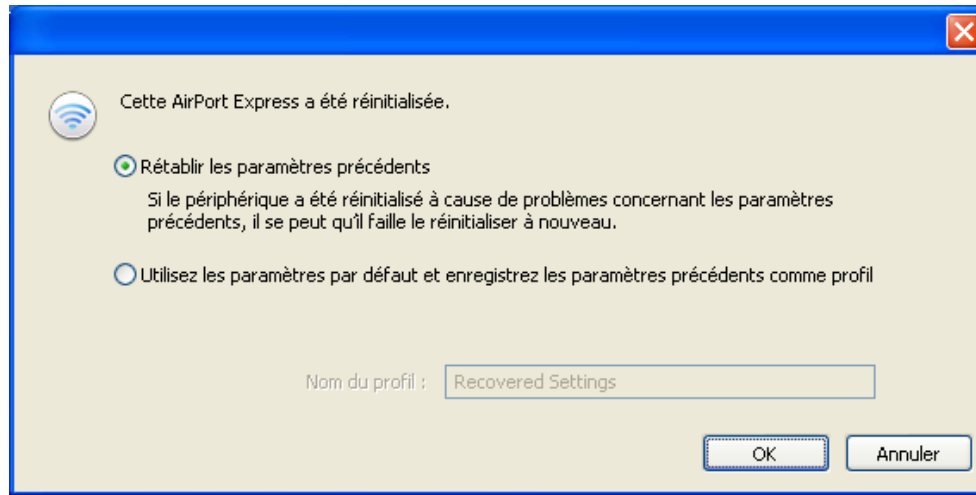
MICROMEGA

4. Click on Continue



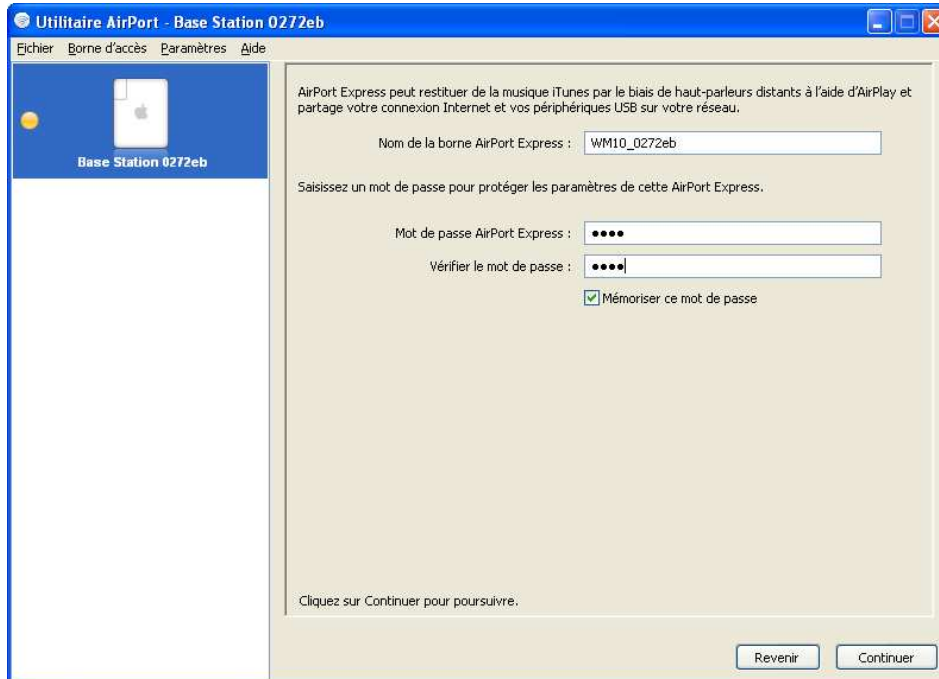
MICROMEGA

5. “Restore previous profile” – then click OK



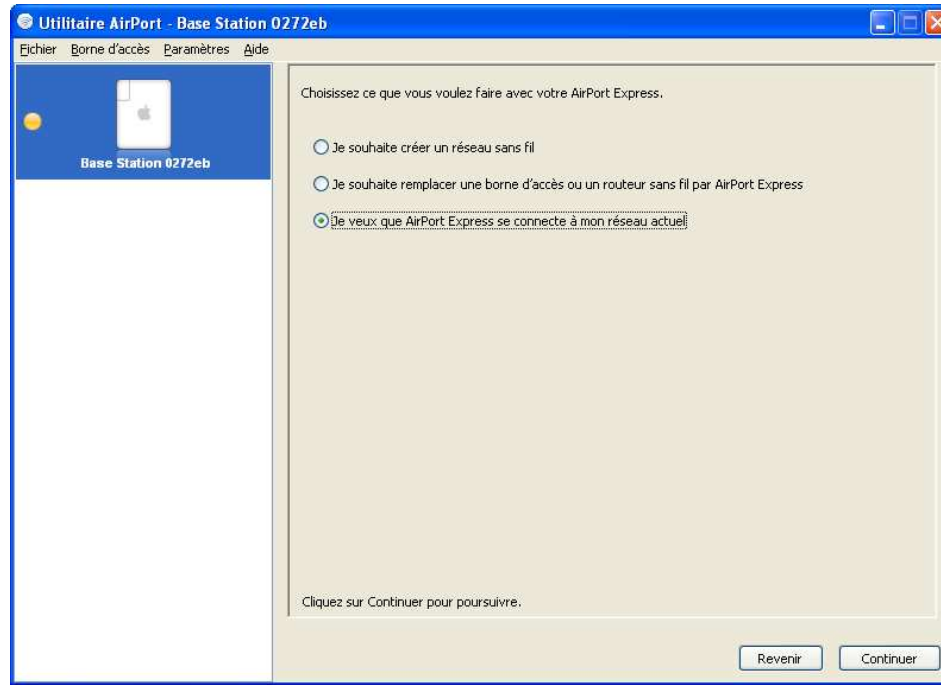
MICROMEGA

Enter the name you wish to give **to your device** - Enter a protection password that you have to define – Click on Continue.



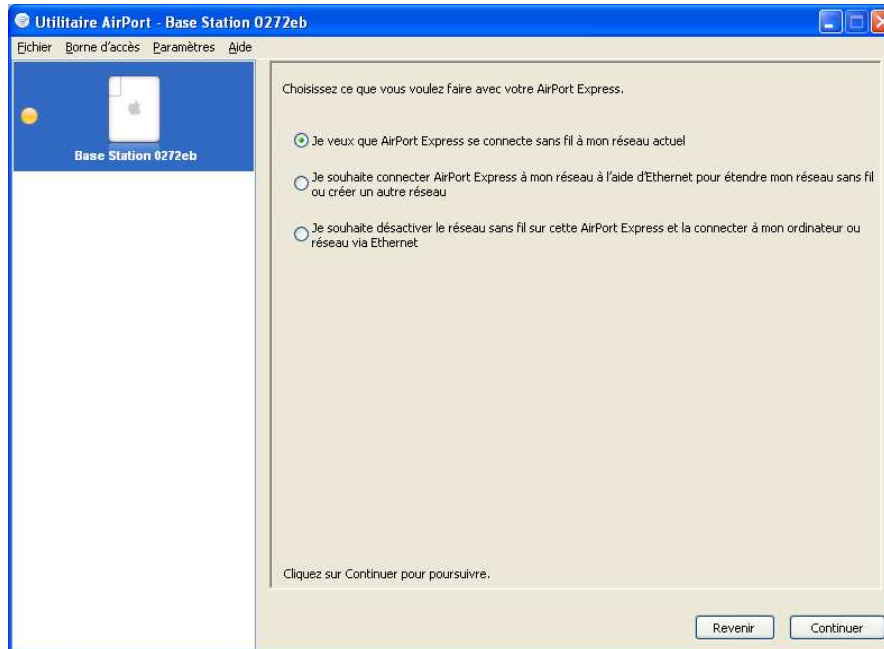
MICROMEGA

6. Click « I want my Airport Express to connect to my existing network ». Click on Continue.



MICROMEGA

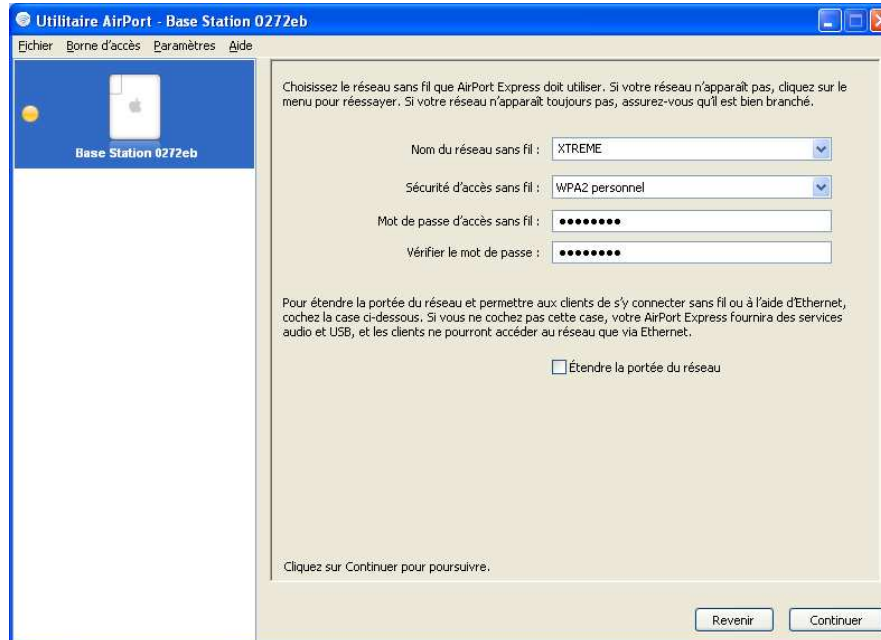
- Click « I want my Airport Express to connect wirelessly to my existing network ». Click on Continue.



MICROMEGA

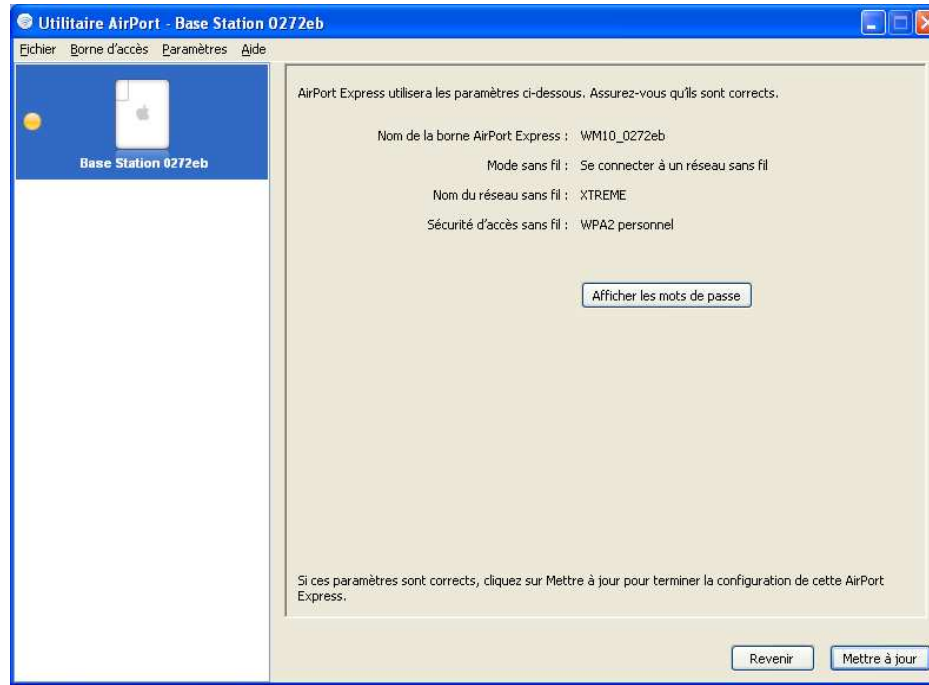
8. Sélectionnez le nom du réseau sans fil (ici XTREME), et entrez le correspondant **WIFI network password** deux fois. Cliquez Continuer.

(This password is set for you during the installation of your server for internet access. If necessary, pls refer to your provider's documentation)



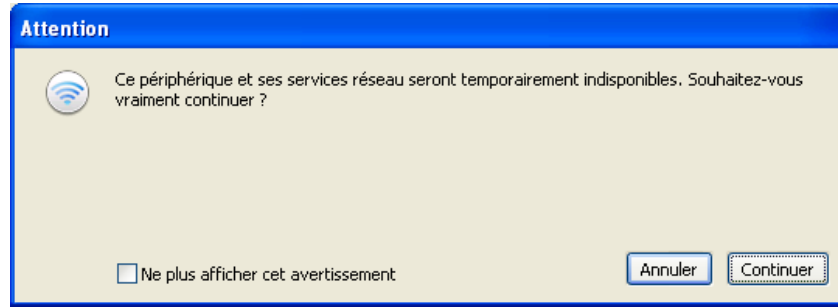
MICROMEGA

9. Refresh

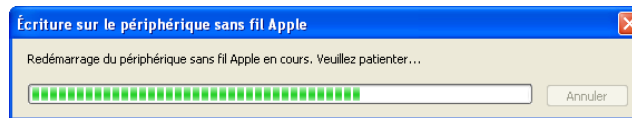


MICROMEGA

10. Continue

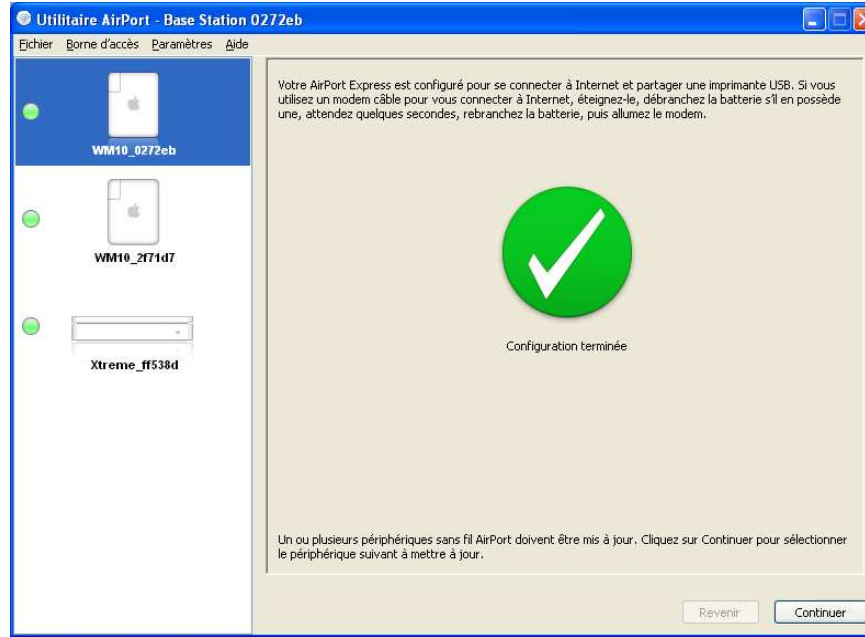


Wait for a while for automatic update.



MICROMEGA

11. This screen displays, and the led on your device becomes **blue**.



CONGRATULATIONS !!! Set-up is achieved.