

# MICROMEGA

## HOW TO CONNECT YOUR AIRDREAM WIFI STREAMER



# MICROMEGA



1. Connect first your device to your existing hifi system (amplifier, preamplifier, active loudspeakers...)
2. Switch it ON with the switch located at the rear side of your product.
3. **WM10** : Wait up to 1min 30s until the front led indicator becomes **BLUE**.

**AS400** : Standby, then select « AIR » input, and wait up to 1min 30s until the « airdream » logo on the front end becomes **BLUE**.

**ARIA** AirDream : Wait 1min to 1min30s until « WHiFI » logo becomes **WHITE**.

# MICROMEGA

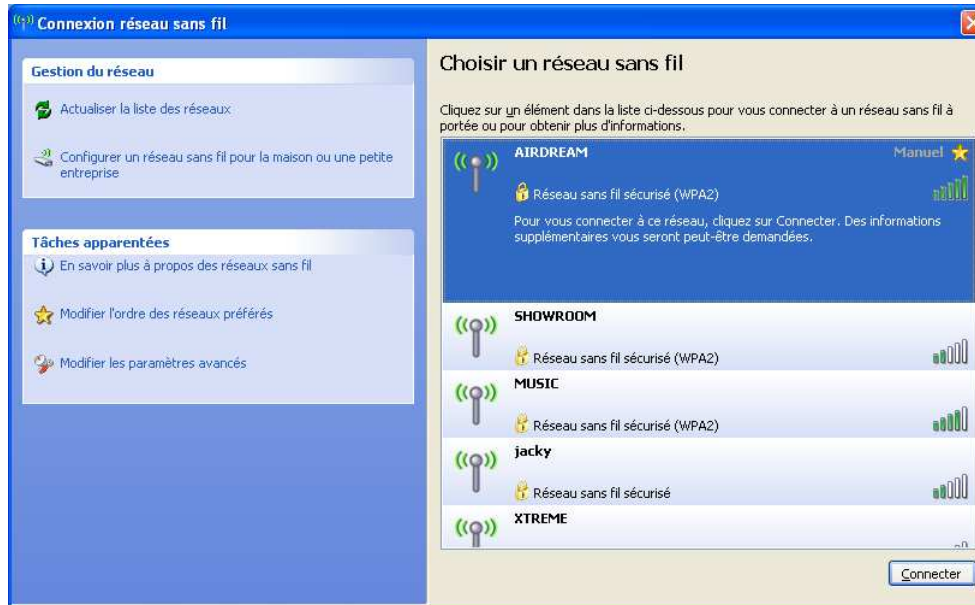
## 4. Connecting your device with your PC or Mac

- a. To open « Available wireless networks », click or double-click on the network icon ( or ) in your toolbar.



# MICROMEGA

- b. In the available networks list, click on your device's network name.  
*The default network name is indicated, depending of your model, in the board at the bottom of this document.*  
*(If you have made a reset of your product, you must obviously choose the network name you have entered)*

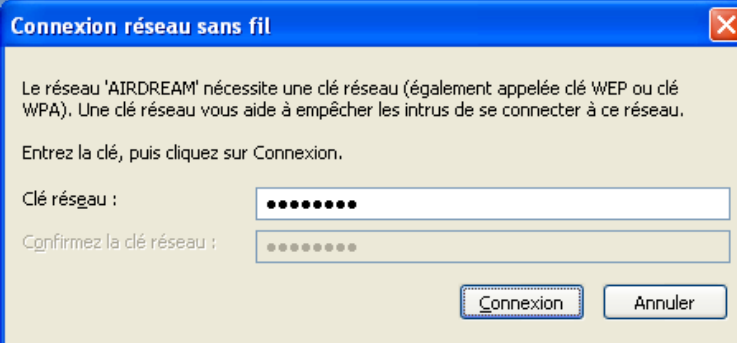


# MICROMEGA

- c. Enter your network's password (key), then click on « Connect ».

*The default network name is indicated, depending of your model, in the board at the bottom of this document.*

*(If you have made a reset of your product, you must obviously choose the network name you have entered)*



**Connexion réseau sans fil**

Le réseau 'AIRDREAM' nécessite une clé réseau (également appelée clé WEP ou clé WPA). Une clé réseau vous aide à empêcher les intrus de se connecter à ce réseau.


Entrez la clé, puis cliquez sur Connexion.

Clé réseau :

Confirmez la clé réseau :

# MICROMEGA

## 5. Playing music with iTunes

When opening iTunes, you should find the logo  on the bottom right of your screen, allowing a « speaker » choice. Click on it and select your device (WM10xxxxx).



... and let the Music play !!!!

# MICROMEGA

## Annexe 1.

PRODUCT	Network's name <sup>(*)</sup>	Password <sup>(*)</sup>
<b>WM-10</b>	AIRDREAM	<i>airdream</i>
<b>AS400</b>	MUSIC	<i>airdream</i>
<b>ARIA</b>	ARIA	<i>airdream</i>

<sup>(\*)</sup> : The name « *airdream* » might be « *airstream* » in some cases.